



REGIONAL SPECIALISED METEOROLOGICAL CENTRE-TROPICAL CYCLONES, NEW DELHI

TROPICAL CYCLONE ADVISORY NO. 17

FROM: RSMC TROPICAL CYCLONES NEW DELHI DATED 05.12.2023

FROM: RSMC –TROPICAL CYCLONES, NEW DELHI

**TO: STORM WARNING CENTRE, NAYPYI TAW (MYANMAR)
STORM WARNING CENTRE, BANGKOK (THAILAND)
STORM WARNING CENTRE, COLOMBO (SRILANKA)
STORM WARNING CENTRE, DHAKA (BANGLADESH)
STORM WARNING CENTRE, KARACHI (PAKISTAN)
METEOROLOGICAL OFFICE, MALE (MALDIVES)
OMAN METEOROLOGICAL DEPARTMENT, MUSCAT (THROUGH RTH JEDDAH)
YEMEN METEOROLOGICAL SERVICES, REPUBLIC OF YEMEN (THROUGH RTH JEDDAH)
NATIONAL CENTRE FOR METEOROLOGY, UAE (THROUGH RTH JEDDAH)
PRESIDENCY OF METEOROLOGY AND ENVIRONMENT, SAUDI ARABIA (THROUGH RTH JEDDAH)
IRAN METEOROLOGICAL ORGANISATION, (THROUGH RTH JEDDAH)
QATAR METEOROLOGICAL DEPARTMENT (THROUGH RTH JEDDAH)**

TROPICAL CYCLONE ADVISORY NO. 17 FOR NORTH INDIAN OCEAN (THE BAY OF BENGAL AND ARABIAN SEA) VALID FOR NEXT 120 HOURS ISSUED AT 0145 UTC OF 05.12.2023 BASED ON 0000 UTC OF 05.12.2023

SUB: SEVERE CYCLONIC STORM “MICHAUNG” (PRONOUNCED AS MIGJAUM) OVER WESTCENTRAL BAY OF BENGAL OFF SOUTH ANDHRA PRADESH COASTS (CYCLONE WARNING FOR ANDHRA PRADESH COASTS: **RED MESSAGE)**

THE SEVERE CYCLONIC STORM “MICHAUNG” (PRONOUNCED AS MIGJAUM) OVER WESTCENTRAL & ADJOINING SOUTHWEST BAY OF BENGAL OFF SOUTH ANDHRA PRADESH COASTS MOVED NORTHWARDS WITH A SPEED OF 7 KMPH DURING PAST 06 HOURS AND LAY CENTERED AT 0000 UTC OF TODAY, THE 5TH DECEMBER, 2023 OVER WESTCENTRAL BAY OF BENGAL OFF SOUTH ANDHRA PRADESH COASTS NEAR LATITUDE 14.9°N AND LONGITUDE 80.2°E, ABOUT 25 KM NORTH-NORTHEAST OF NELLORE (43245), 20 KM EAST OF KAVALI (43243), 200 KM NORTH OF CHENNAI (43279), 110 KM SOUTH-SOUTHWEST OF BAPATLA (43220) AND 170 KM SOUTH-SOUTHWEST OF MACHILIPATNAM (43185).

AS THE SYSTEM IS NEARLY MOVING NORTHWARDS CLOSE TO COAST, SOME PART OF THE WALL CLOUD REGION LIES OVER THE LAND. THE SYSTEM IS LIKELY TO MOVE NEARLY NORTHWARDS PARALLEL AND CLOSE TO SOUTH ANDHRA PRADESH COAST AND CROSS SOUTH ANDHRA PRADESH COAST BETWEEN NELLORE AND MACHILIPATNAM, CLOSE TO BAPATLA BY 0600 UTC OF 5TH DECEMBER AS A SEVERE CYCLONIC STORM WITH A MAXIMUM SUSTAINED WIND SPEED OF 90-100 KMPH GUSTING TO 110 KMPH.

TRACK AND INTENSITY FORECASTS:

DATE/TIME (UTC)	POSITION (LAT. °N/ LONG. °E)	MAXIMUM SUSTAINED SURFACE WIND SPEED (KMPH)	CATEGORY OF CYCLONIC DISTURBANCE
05.12.23/0000	15.1/80.2	90-100 KMPH GUSTING TO 110 KMPH	SEVERE CYCLONIC STORM
05.12.23/0600	15.7/80.3	85-95 KMPH GUSTING TO 105 KMPH	SEVERE CYCLONIC STORM
05.12.23/1200	16.2/80.5	70-80 KMPH GUSTING TO 90 KMPH	CYCLONIC STORM
05.12.23/1800	16.6/80.8	55-65 KMPH GUSTING TO 75 KMPH	DEEP DEPRESSION
06.12.23/0000	17.3/81.6	40-50 KMPH GUSTING TO 60 KMPH	DEPRESSION

INSAT-3D IMAGERY AT 0000 UTC OF 5TH DECEMBER, INDICATES THE ORGANISATION OF CLOUD MASS. ASSOCIATED INTENSITY IS T3.5. ASSOCIATED BROKEN LOW/MEDIUM CLOUDS WITH EMBEDDED INTENSE TO VERY INTENSE CONVECTION LAY OVER WESTCENTRAL BAY OF BENGAL BETWEEN LATITUDE 13.5°N TO 17.5°N LONGITUDE 80.0E TO 82.5E. MINIMUM CLOUD TOP TEMPERATURE IS MINUS 90 DEGREE CELSIUS.

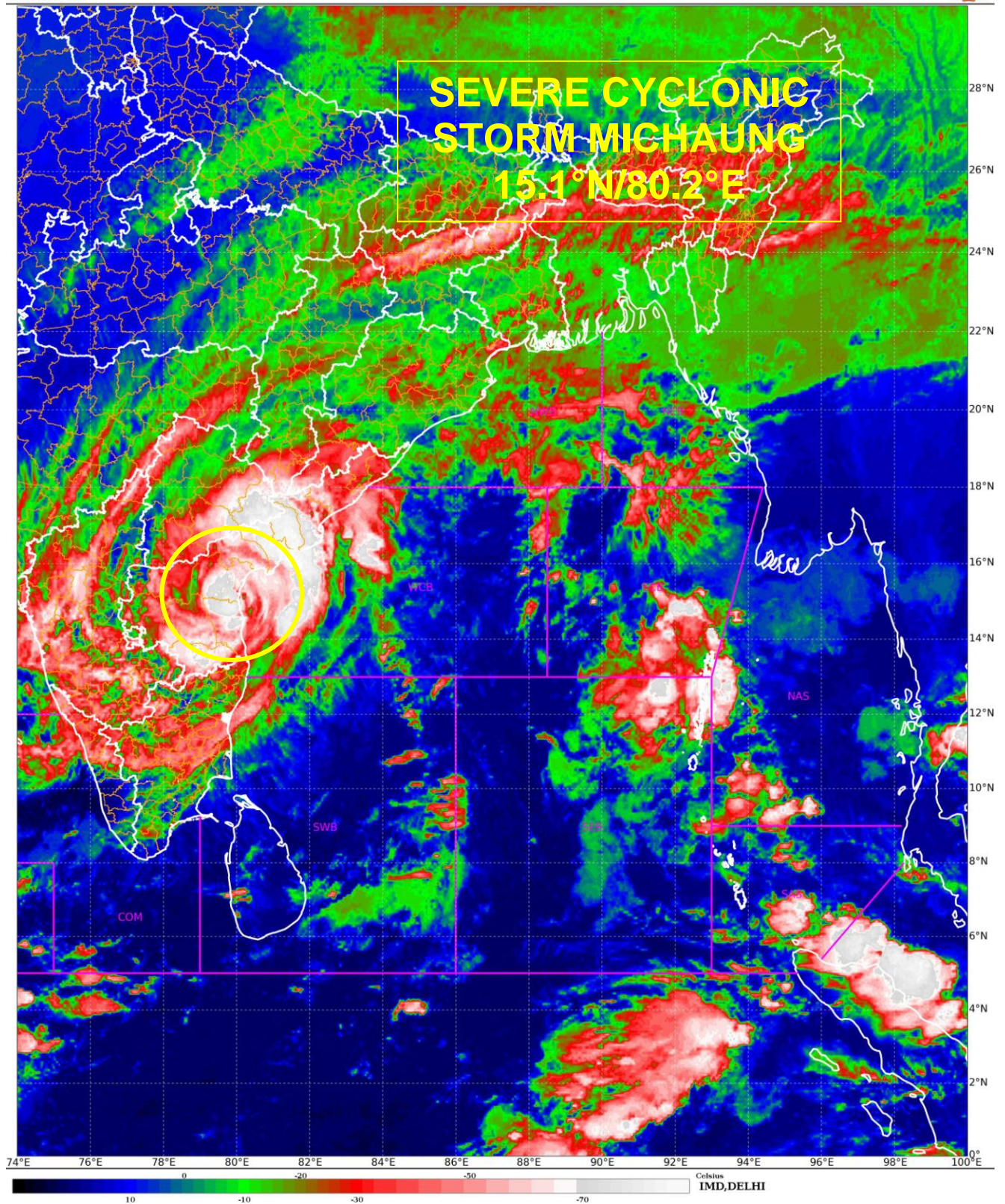
ASSOCIATED MAXIMUM SUSTAINED WIND SPEED IS 50 KNOTS GUSTING TO 60 KNOTS. ESTIMATED CENTRAL PRESSURE IS 988 HPA. SEA CONDITION IS LIKELY TO BE HIGH TO VERY HIGH OVER SOUTHWEST BAY OF BENGAL.

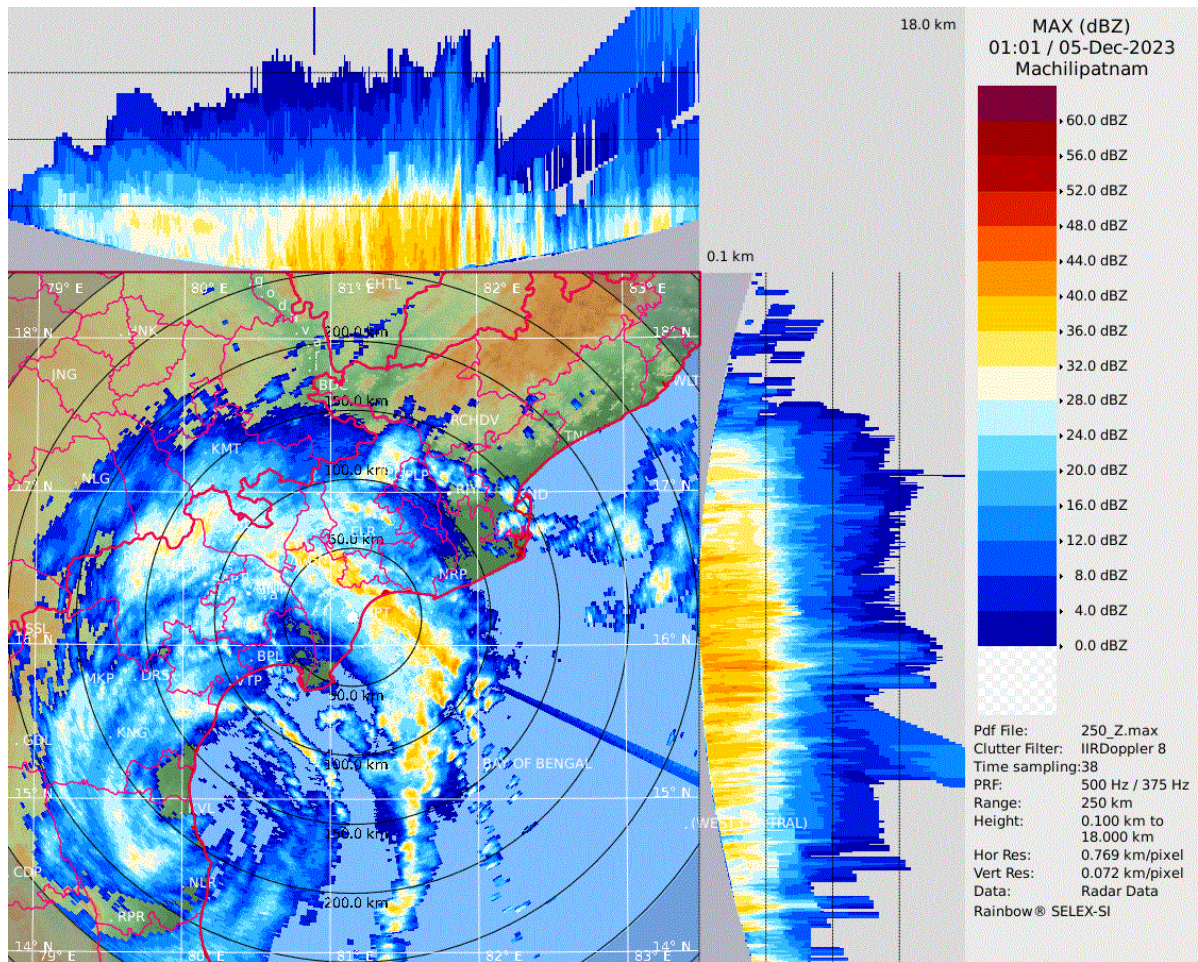
MADDEN JULIAN OSCILLATION (MJO) IS CURRENTLY IN PHASE 4 WITH AMPLITUDE GREATER THAN 1. SEA SURFACE TEMPERATURE IS 27°C AROUND SYSTEM. TROPICAL CYCLONE HEAT POTENTIAL IS 60-70 KJ/CM² OVER SOUTHWEST BOB.

CURRENT ENVIRONMENTAL FEATURES INDICATE, THE LOW LEVEL VORTICITY OF ABOUT $250 \times 10^{-6} \text{S}^{-1}$ AROUND SYSTEM CENTRE WITH VERTICAL EXTENSION UPTO 200 HPA LEVEL. POSITIVE LOW LEVEL CONVERGENCE HAS INCREASED AND IS ABOUT $20 \times 10^{-5} \text{S}^{-1}$ TO THE EAST OF SYSTEM CENTRE. POSITIVE UPPER LEVEL DIVERGENCE IS ABOUT $30 \times 10^{-5} \text{S}^{-1}$ TO

CONSIDERING ALL THE ABOVE, THE SYSTEM IS LIKELY TO MOVE NEARLY NORTHWARDS PARALLEL AND CLOSE TO SOUTH ANDHRA PRADESH COAST AND CROSS SOUTH ANDHRA PRADESH COAST BETWEEN NELLORE AND MACHILIPATNAM, CLOSE TO BAPATLA BY 0600 UTC OF 5TH DECEMBER AS A SEVERE CYCLONIC STORM WITH A MAXIMUM SUSTAINED WIND SPEED OF 90-100 KMPH GUSTING TO 110 KMPH.

(M. T. BUSHAIR)
RSMC NEW DELHI



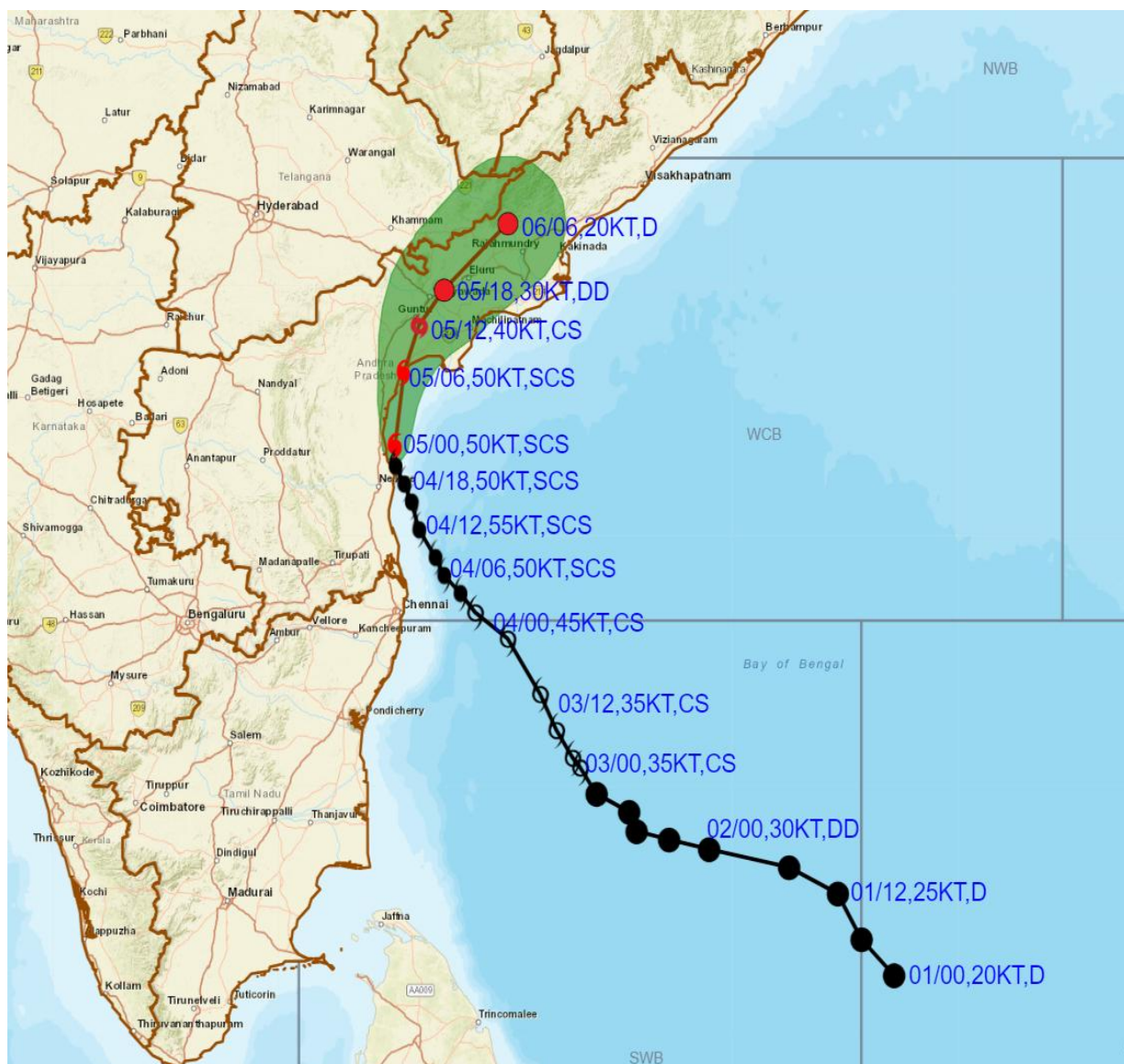


MACHILIPATNAM DWR

Cloud distribution: (a) Isolated: <25%, Scattered: 25-50%, Broken: 51-75%, Solid: >75%, Convection Intensity: (a) Weak: Cloud Top Temperature (CTT) >-25°C, (b) Moderate: CTT: - 25°C to -40°C, (c) Intense: CTT: - 41°C to -70°C and (d) Very Intense: : Less than -70°C
PROBABILITY OF CYCLOGENESIS (FORMATION OF DEPRESSION): NIL: 0%, LOW: 1-33%, , MODERATE: 34-66% AND HIGH: 67-100%
This is a guidance Bulletin for WMO/ESCAP Panel Member countries. Visit respective National websites for Country specific Bulletins



OBSERVED AND FORECAST TRACK ALONGWITH CONE OF UNCERTAINTY IN ASSOCIATION WITH SEVERE CYCLONIC STORM "MICHAUNG" OVER WESTCENTRAL BAY OF BENGAL BASED ON 0000 UTC (0530 IST) OF 5TH



DATE/TIME IN UTC

IST=UTC + 0530

L: LOW PRESSURE AREA

WML: WELL MARKED LOW PRESSURE AREA

D: DEPRESSION (17-27 KT)

DD: DEEP DEPRESSION (28-33 KT)

CS: CYCLONIC STORM (34-47 KT)

SCS: SEVERE CYCLONIC STORM (48-63KT)

VSCS: VERY SEVERE CYCLONIC STORM (64-89 KT)

ESCS: EXTREMELY SEVERE CYCLONIC STORM (90-119 KT)

SuCS: SUPER CYCLONIC STORM (≥ 120 KT)

● LESS THAN 34 KT

○ 34-47 KT

● ≥ 48 KT

— OBSERVED TRACK

— FORECAST TRACK

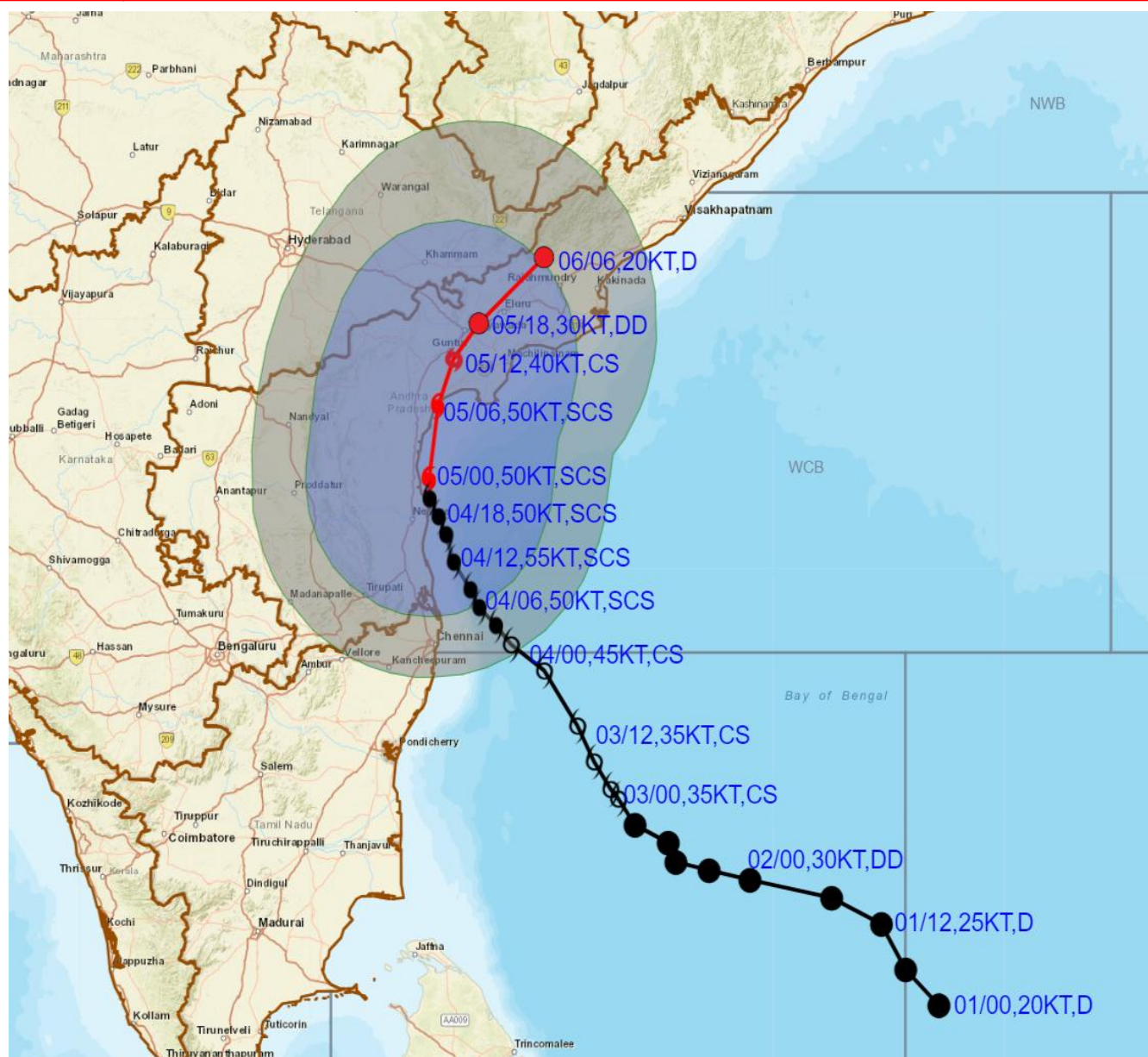
▲ CONE OF UNCERTAINTY

Forecast	DISTANCE (KM) AND DIRECTION FROM STATIONS				
Date and Time (UTC)	CHENNAI/MINAMB AKKAM	NELLORE	MO PONDICHERRY	BAPATLA	MACHILIPATNAM/ FRANCHPET
05.12.23/0000	220, N	60, NNE	330, N	120, SSW	170, SW
06.12.23/0600	510, NNE	370, NNE	630, NNE	200, NE	140, NNE

Cloud distribution: (a) Isolated: <25%, Scattered:25-50%, Broken: 51-75%, Solid:>75%, Convection Intensity: (a) Weak: Cloud Top Temperature (CTT) >-25°C, (b) Moderate: CTT: - 25°C to -40°C, (c) Intense: CTT: - 41°C to -70°C and (d) Very Intense: : Less than -70°C
PROBABILITY OF CYCLOGENESIS (FORMATION OF DEPRESSION):NIL: 0%, LOW: 1-33%, , MODERATE: 34-66% AND HIGH: 67-100%
This is a guidance Bulletin for WMO/ESCAP Panel Member countries. Visit respective National websites for Country specific Bulletins



OBSERVED AND FORECAST TRACK ALONGWITH QUADRANT WIND IN ASSOCIATION WITH SEVERE CYCLONIC STORM “MICHAUNG” OVER WESTCENTRAL BAY OF BENGAL BASED ON 0000 UTC (0530 IST) OF 5TH DECEMBER 2023.



DATE/TIME IN UTC

IST=UTC + 0530

L: LOW PRESSURE AREA

WML: WELL MARKED LOW PRESSURE AREA

D: DEPRESSION (17-27 KT)

DD: DEEP DEPRESSION (28-33 KT)

CS: CYCLONIC STORM (34-47 KT)

SCS: SEVERE CYCLONIC STORM (48-63KT)

VSCS: VERY SEVERE CYCLONIC STORM (64-89 KT)

ESCS: EXTREMELY SEVERE CYCLONIC STORM (90-119 KT)

SuCS: SUPER CYCLONIC STORM (≥ 120 KT)

● LESS THAN 34 KT

○ 34-47 KT

● ≥ 48 KT

— OBSERVED TRACK

— FORECAST TRACK

— CONE OF UNCERTAINTY

AREA OF MAXIMUM SUSTAINED WIND SPEED:

— 28-33 KT (52-61 KMPH)

— 34-49 KT (62-91 KMPH)

— 50-63 KT (92-117 KMPH)

— ≥ 64 KT (≥118 KMPH)

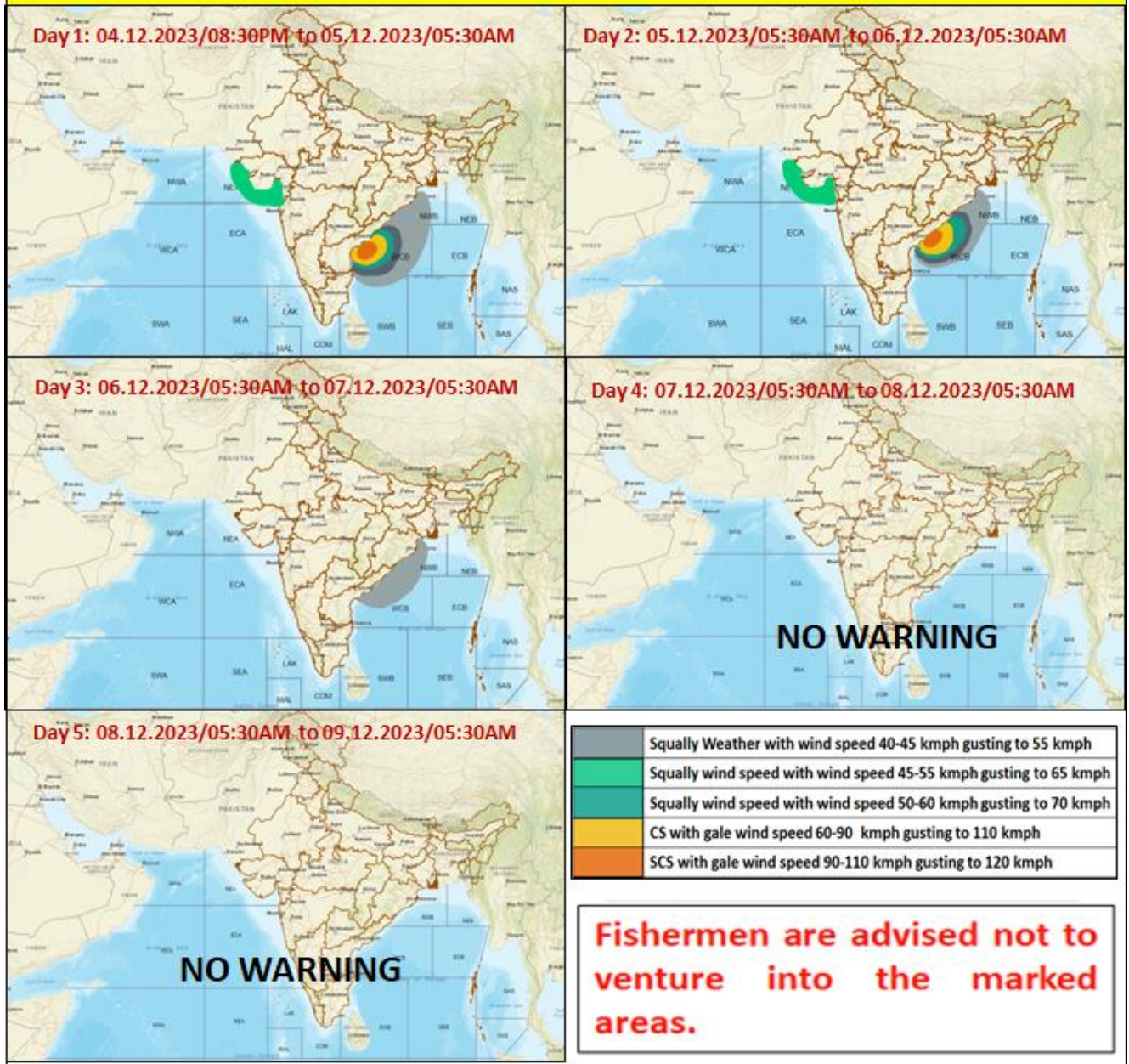
IMPACT OVER THE SEA

MSW (knot/kmph)	Impact	Action
28-33 (52-61)	Very rough seas	Total suspension of fishing operations
34-49 (62-91)	High to very high seas	Total suspension of fishing operations
50-63 (92-117)	Very high seas	Total suspension of fishing operations
≥ 64 (≥118)	Phenomenal	Total suspension of fishing operations

Cloud development
Temperature
PROBABILITY OF CYCLOGENESIS (FORMATION OF DEPRESSION): NIL: 0%, LOW: 1-33%, MODERATE: 34-66% AND HIGH: 67-100%
This is a guidance Bulletin for WMO/ESCAP Panel Member countries. Visit respective National websites for Country specific Bulletins

70°C

Fishermen Warning Graphics



Storm Surge Warning Graphics based on Forecast Track

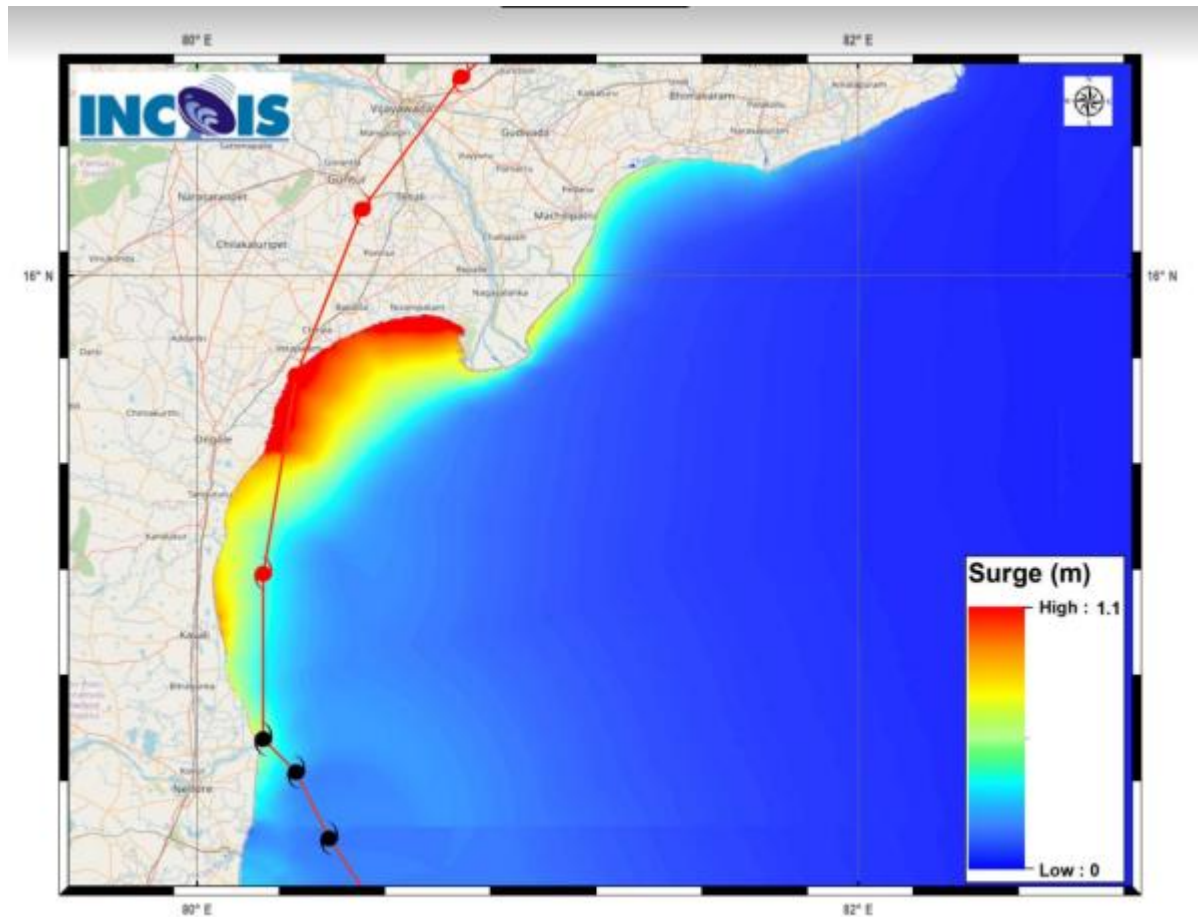


Figure: Storm Surge Map

STORM SURGE HEIGHT INFORMATION:

* The below listed surge heights are over and above astronomical tide.

MANDAL/TALUK	DISTRICT	STATE / UNION TERRITORY	NEAREST PLACE OF HABITATION	STORM SURGE (m) *	EXPECTED INUNDATION EXTENT (km)
Repalle	Guntur	Andhra Pradesh	Repalle	0.4-1.1	Upto 0.23
Sullurpeta	Nellore	Andhra Pradesh	Duggaraja Patnam	0.2-1.0	Upto 0.24
Bapatla	Guntur	Andhra Pradesh	Bapatla	0.6-0.8	Upto 0.19
Chirala	Prakasam	Andhra Pradesh	Kotha Peta (Rural)	0.6-0.8	Upto 0.17
Ongole	Prakasam	Andhra Pradesh	Kannuparthi	0.4-0.8	Upto 0.16
Kovvuru	Nellore	Andhra Pradesh	Isakapalle	0.3-0.5	Upto 0.13